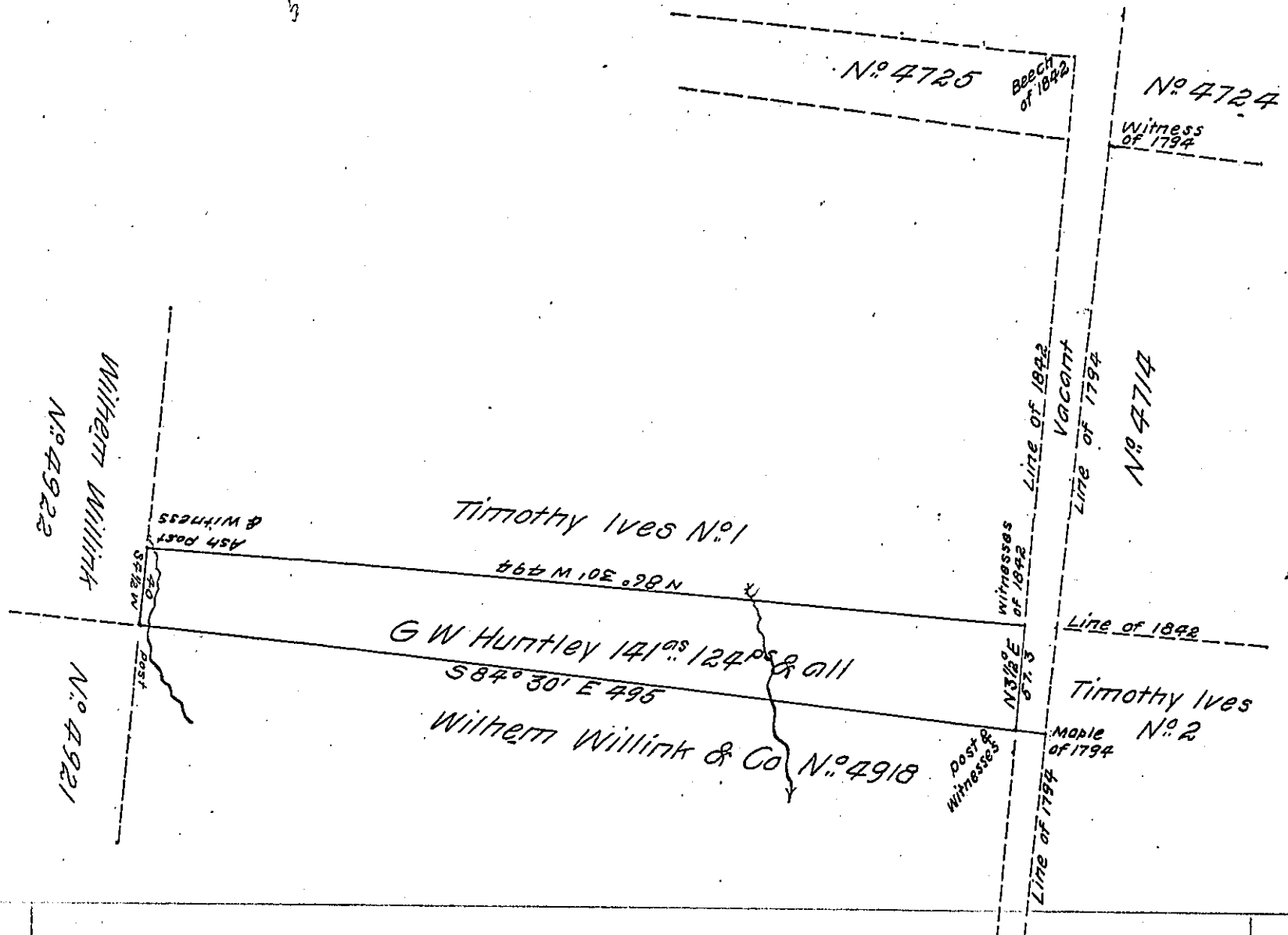


524-7



Draft of a tract of land situated in Wharton Township in the County of Potter containing one hundred and forty one acres one hundred and twenty four perches and allowance of six per cent for roads &c. Surveyed on the fourteenth day of April 1886 in pursuance of a warrant granted to G W Huntley dated the 24th day of March 1886.

To Hon J Simpson Africa } W^m P Mitchell for
Secretary of In Affairs } O J Rees County Surveyor

Note this survey is located upon the same ground that I believe to be the southern part of Timothy Ives No. 1

Examined and approved this 27th day of July 1886 O J Rees

O J Rees County Surveyor County Surveyor

IN TESTIMONY that the above is a copy of the original remaining on file in the Department of Internal Affairs of Pennsylvania, made conformably to an Act of Assembly approved the 16th day of February, 1833, I have hereunto set my Hand and caused the Seal of said Department to be affixed at Harrisburg, this nineteenth day of May 1905

George B. Brown
Secretary of Internal Affairs.